
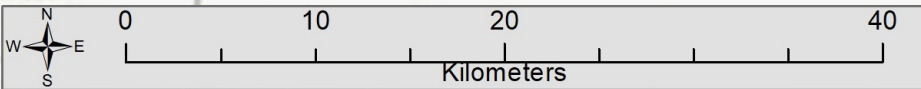
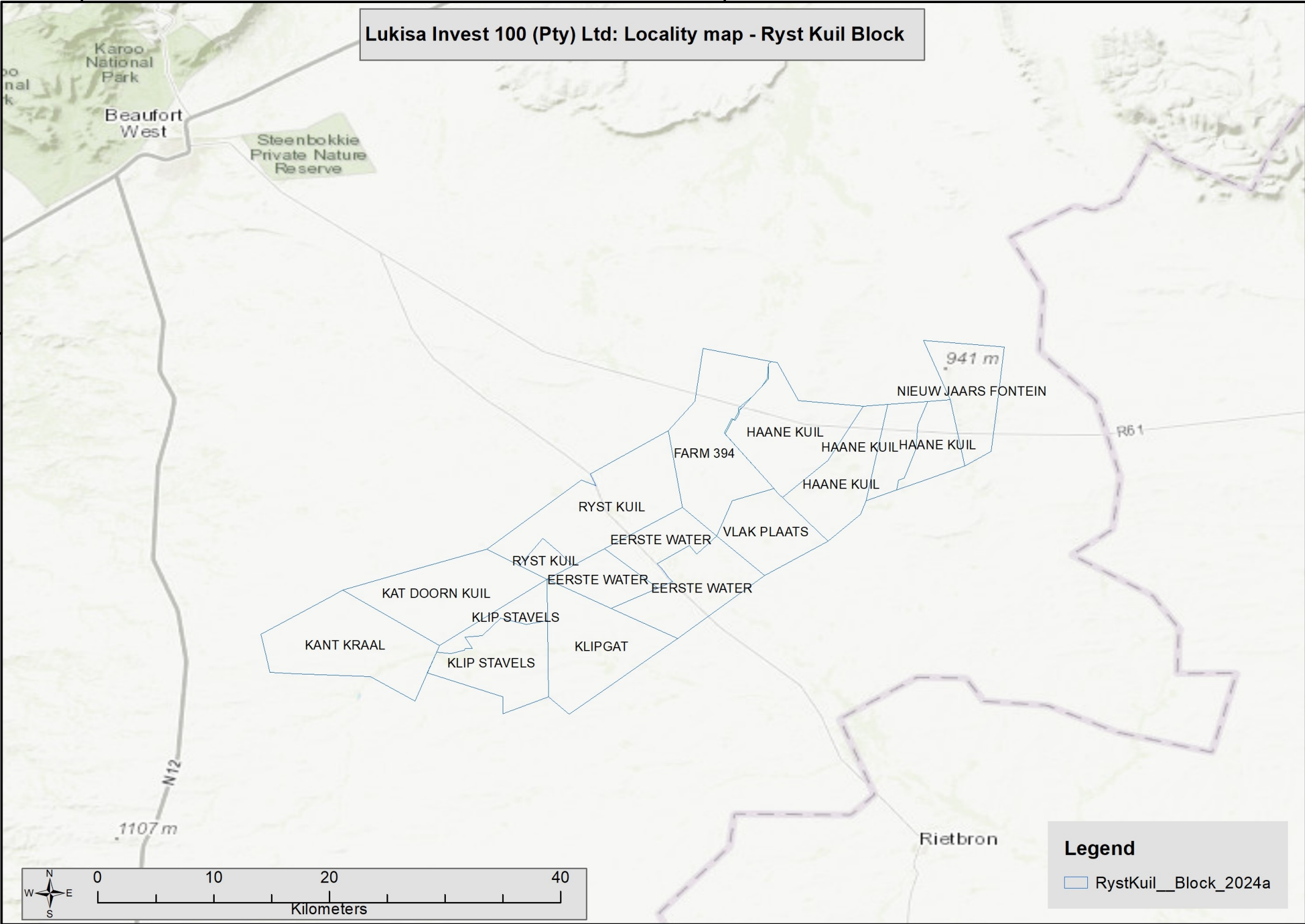


Appendix 3: Locality plan
Proposed infrastructure
Screening report.



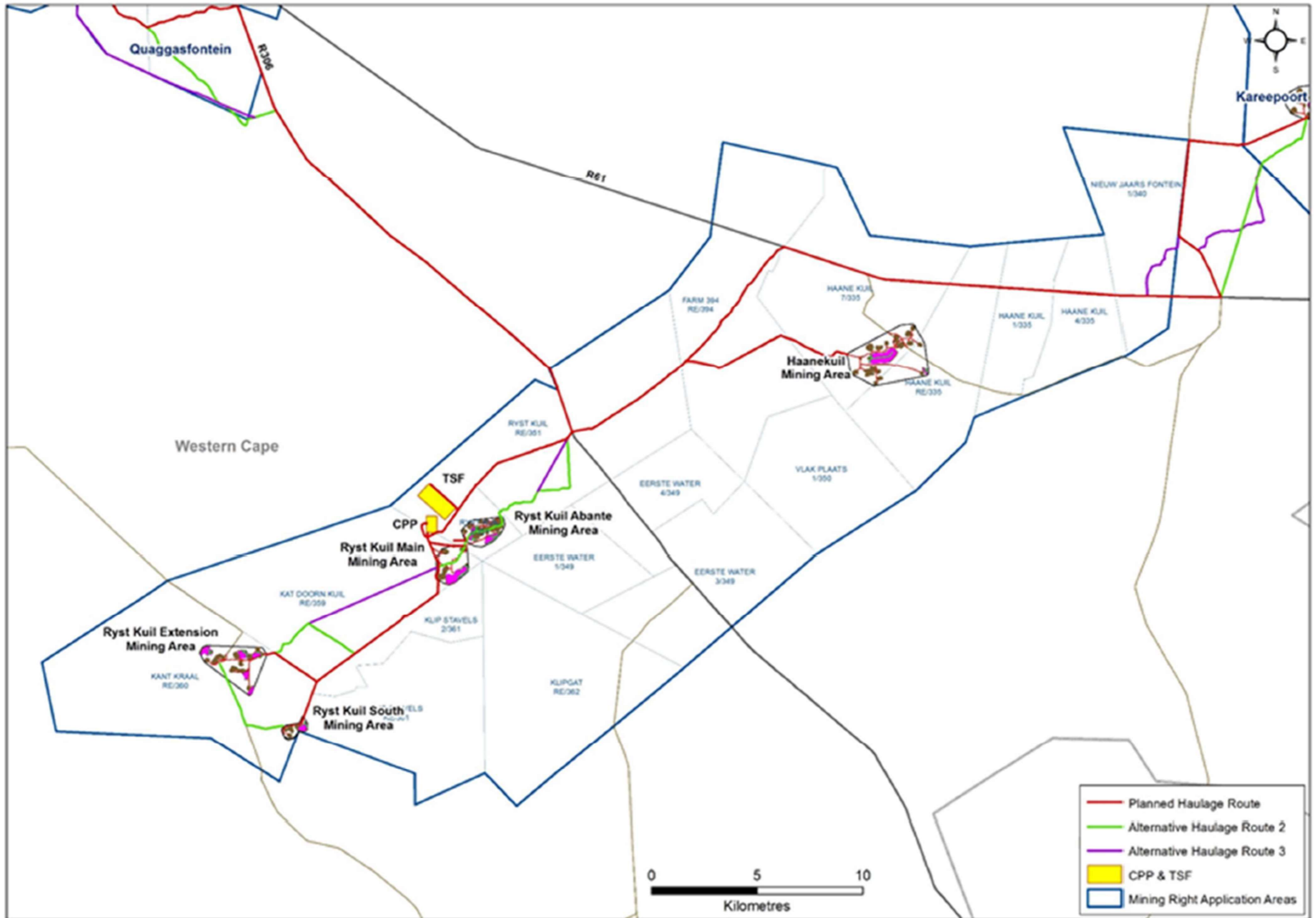
Lukisa Invest 100 (Pty) Ltd: Locality map - Ryst Kuil Block



Legend

- RystKuil_Block_2024a

Proposed infrastructure and layout.



**SCREENING REPORT FOR AN ENVIRONMENTAL AUTHORIZATION AS
REQUIRED BY THE 2014 EIA REGULATIONS – PROPOSED DEVELOPMENT
FOOTPRINT ENVIRONMENTAL SENSITIVITY**

EIA Reference number: WC10178MR

Project name: Ryst Kuil, Beaufort West, Western Cape

Project title: Ryst Kuil Block Mining right application

Date screening report generated: 21/12/2023 17:49:12

Applicant: Lukisa Invest 100 (Pty) Ltd

Compiler: E. van der Linde

Compiler signature:



Application Category: Mining|Mining Right

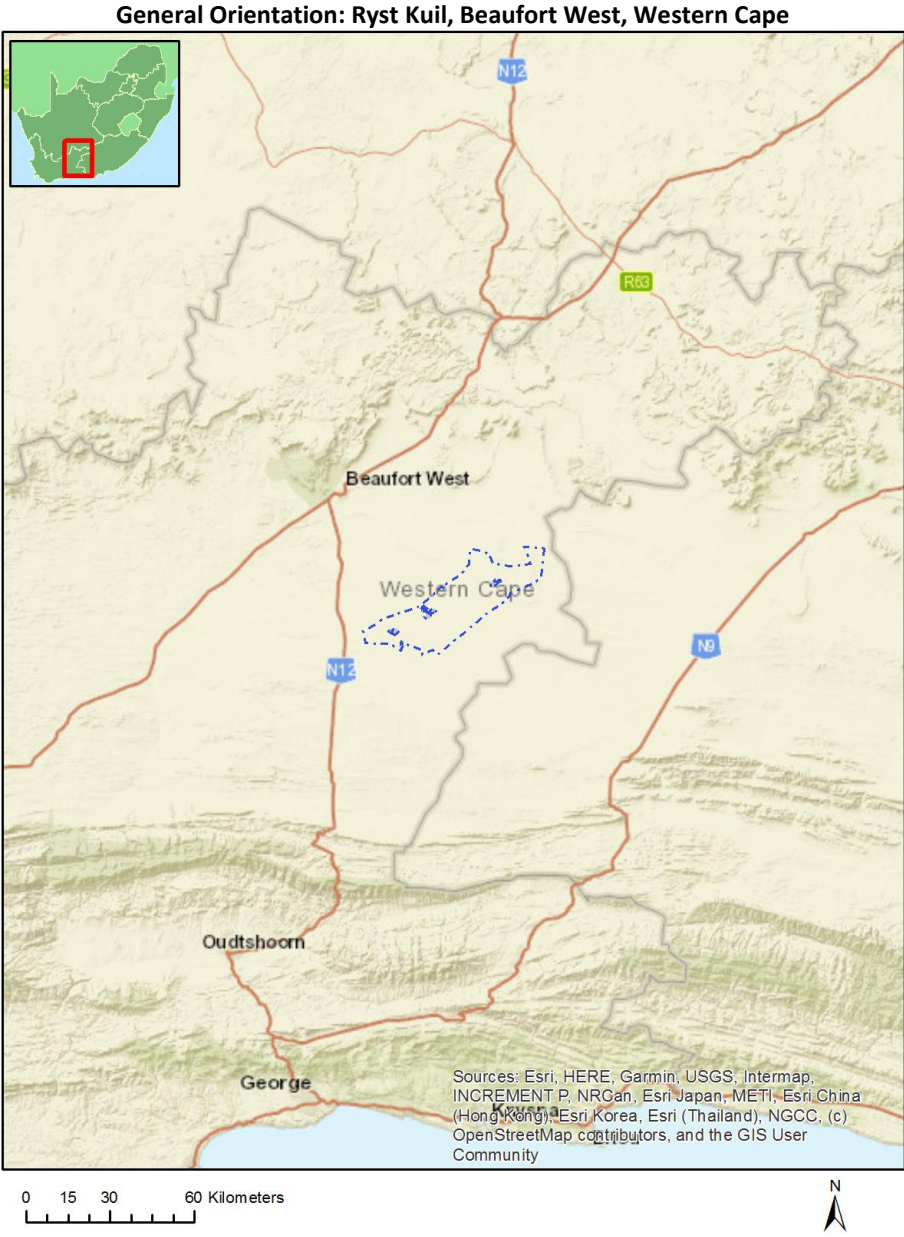


Table of Contents

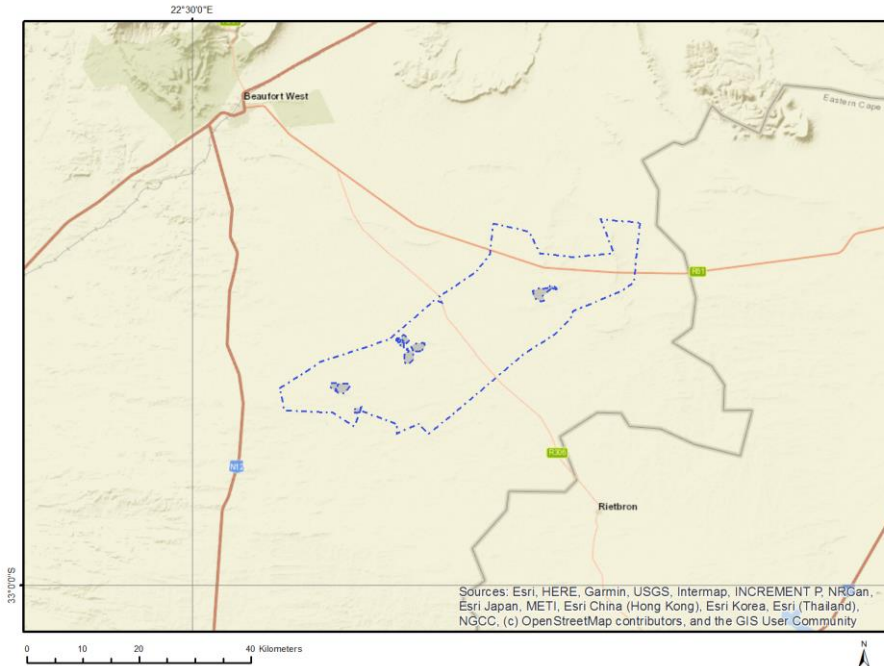
Proposed Project Location	3
Orientation map 1: General location	3
Map of proposed site and relevant area(s)	4
Cadastral details of the proposed site	4
Wind and Solar developments with an approved Environmental Authorisation or applications under consideration within 30 km of the proposed area	8
Environmental Management Frameworks relevant to the application	8
Environmental screening results and assessment outcomes	8
Relevant development incentives, restrictions, exclusions or prohibitions	8
Proposed Development Area Environmental Sensitivity	9
Specialist assessments identified	9
Results of the environmental sensitivity of the proposed area	11
MAP OF RELATIVE AGRICULTURE THEME SENSITIVITY	11
MAP OF RELATIVE ANIMAL SPECIES THEME SENSITIVITY	12
MAP OF RELATIVE AQUATIC BIODIVERSITY THEME SENSITIVITY	13
MAP OF RELATIVE ARCHAEOLOGICAL AND CULTURAL HERITAGE THEME SENSITIVITY	14
MAP OF RELATIVE CIVIL AVIATION THEME SENSITIVITY	15
MAP OF RELATIVE DEFENCE THEME SENSITIVITY	16
MAP OF RELATIVE PALEONTOLOGY THEME SENSITIVITY	17
MAP OF RELATIVE PLANT SPECIES THEME SENSITIVITY	18
MAP OF RELATIVE TERRESTRIAL BIODIVERSITY THEME SENSITIVITY	19

Proposed Project Location

Orientation map 1: General location



Map of proposed site and relevant area(s)



Cadastral details of the proposed site

Property details:

No	Farm Name	Farm/ Erf No	Portion	Latitude	Longitude	Property Type
1		394	0	32°34'55.07S	22°59'36.65E	Farm
2	VLAK PLAATS	350	0	32°39'13.38S	23°2'0.36E	Farm
3		434	0	32°40'30.38S	22°51'35.9E	Farm
4	KAT DOORN KUIL	359	0	32°42'9.45S	22°47'8.04E	Farm
5	EERSTE WATER	349	0	32°41'14.38S	22°57'9.51E	Farm
6	RYST KUIL	351	0	32°38'18.78S	22°54'3.09E	Farm
7	KANT KRAAL	360	0	32°44'32.99S	22°42'34.14E	Farm
8	KLIP STAVELS	361	0	32°45'25.24S	22°49'40.66E	Farm
9	HAANE KUIL	335	0	32°35'24.51S	23°5'26.22E	Farm
10		434	0	32°42'56.27S	22°49'58.35E	Farm
11	KLIP GAT	362	0	32°44'36.26S	22°53'49.57E	Farm
12		442	0	32°38'43.28S	23°7'18.55E	Farm
13	NIEUW JAARS FONTEIN	340	0	32°32'46.14S	23°12'54.12E	Farm
14	EERSTE WATER	349	4	32°39'50.53S	22°57'2.4E	Farm Portion
15	HAANE KUIL	335	0	32°36'42S	23°5'27.34E	Farm Portion
16		434	0	32°42'47.4S	22°50'38.03E	Farm Portion
17	VLAK PLAATS	350	1	32°39'14.26S	23°2'0.62E	Farm Portion
18	RYST KUIL	351	0	32°38'5.43S	22°54'17.55E	Farm Portion
19	HAANE KUIL	335	4	32°35'12.04S	23°9'46.94E	Farm Portion
20	HAANE KUIL	335	7	32°34'35.74S	23°2'56.47E	Farm Portion
21	KARROOSIDE	347	1	32°39'39.45S	23°5'23.33E	Farm Portion
22	KANT KRAAL	360	0	32°44'32.99S	22°42'34.14E	Farm Portion
23	HAANE KUIL	335	1	32°35'18.18S	23°7'57.59E	Farm Portion
24	KLIP STAVELS	361	0	32°45'7.47S	22°49'27.24E	Farm Portion
25	NIEUW JAARS FONTEIN	340	1	32°32'41.75S	23°11'27.35E	Farm Portion

26	HAANE KUIL	335	5	32°33'32.82S	23°0'42.57E	Farm Portion
27		394	0	32°34'55.07S	22°59'36.65E	Farm Portion
28	KLIP STAVELS	361	0	32°44'56.79S	22°49'40.4E	Farm Portion
29	SCHILDPAKOP	342	4	32°38'41.88S	23°9'14.68E	Farm Portion
30	KARROOSIDE	347	0	32°41'2.98S	23°6'3.67E	Farm Portion
31		442	0	32°38'42.22S	23°7'23.33E	Farm Portion
32	KLIP GAT	362	0	32°44'36.26S	22°53'49.57E	Farm Portion
33		434	0	32°40'35.39S	22°51'40.68E	Farm Portion
34	RYST KUIL	351	2	32°40'44.38S	22°51'34.91E	Farm Portion
35	KLIP STAVELS	361	2	32°43'0.56S	22°49'41.42E	Farm Portion
36	EERSTE WATER	349	1	32°41'30.6S	22°54'22.61E	Farm Portion
37	EERSTE WATER	349	3	32°41'52.71S	22°58'30.53E	Farm Portion
38	KAT DOORN KUIL	359	0	32°42'16.73S	22°47'14.8E	Farm Portion

Development footprint¹ vertices:

Footprint	Latitude	Longitude
1	32°35'57.73S	23°4'29.43E
1	32°36'34.82S	23°3'41.93E
1	32°36'46.4S	23°3'51.56E
1	32°36'57.76S	23°3'45.55E
1	32°36'59.8S	23°3'32.87E
1	32°36'42S	23°2'52.86E
1	32°36'31.65S	23°2'48.63E
1	32°36'20.14S	23°2'46.54E
1	32°36'9.26S	23°2'43.71E
1	32°35'52.32S	23°3'26.39E
1	32°35'54.65S	23°3'32.1E
1	32°35'59.03S	23°3'33.57E
1	32°35'56.36S	23°4'8.41E
1	32°35'50.15S	23°4'17.09E
1	32°35'50.48S	23°4'22.8E
1	32°35'54.01S	23°4'27.65E
1	32°35'57.73S	23°4'29.43E
2	32°35'53.58S	23°5'3.16E
2	32°35'59.69S	23°5'1.47E
2	32°35'55.39S	23°4'32.43E
2	32°35'56.78S	23°4'30.64E
2	32°35'53.22S	23°4'28.93E
2	32°35'49.21S	23°4'23.41E
2	32°35'48.94S	23°4'18.78E
2	32°35'44.53S	23°4'24.97E
2	32°35'43.58S	23°4'39.9E
2	32°35'53.58S	23°5'3.16E
3	32°41'55.72S	22°50'20.72E
3	32°41'49.96S	22°50'18.67E
3	32°41'43.32S	22°50'23.48E
3	32°41'19.97S	22°50'20.92E
3	32°41'9.66S	22°50'28.32E
3	32°41'5.1S	22°50'45.05E
3	32°41'4.05S	22°50'45.14E
3	32°41'4.29S	22°50'51.43E
3	32°41'4.15S	22°51'5.54E

¹ “development footprint”, means the area within the site on which the development will take place and includes all ancillary developments for example roads, power lines, boundary walls, paving etc. which require vegetation clearance or which will be disturbed and for which the application has been submitted.

3	32°41'1.94S	22°51'9.04E
3	32°40'59.83S	22°51'10.5E
3	32°40'56.97S	22°51'10.92E
3	32°40'41.41S	22°51'3.37E
3	32°40'29.54S	22°51'16.93E
3	32°40'24.05S	22°51'37.07E
3	32°40'20.95S	22°52'9.16E
3	32°40'23.56S	22°52'17.45E
3	32°40'28.49S	22°52'19.76E
3	32°40'34.56S	22°52'20.68E
3	32°40'43.66S	22°52'17.41E
3	32°40'50.95S	22°52'10.96E
3	32°40'59.58S	22°51'58.95E
3	32°41'3.12S	22°51'49.56E
3	32°41'2.35S	22°51'21.75E
3	32°41'5.43S	22°51'13.14E
3	32°41'7.03S	22°51'13.79E
3	32°41'38.33S	22°51'17.22E
3	32°41'43.29S	22°51'15.73E
3	32°41'45.62S	22°51'13.15E
3	32°41'57.96S	22°50'56.47E
3	32°42'1.6S	22°50'50.72E
3	32°42'4.22S	22°50'41E
3	32°42'2.97S	22°50'35.05E
3	32°41'55.72S	22°50'20.72E
4	32°44'26.97S	22°44'36.23E
4	32°44'22.25S	22°43'55.15E
4	32°44'19.95S	22°43'54.06E
4	32°44'5.91S	22°43'45.79E
4	32°44'4.83S	22°43'45.7E
4	32°44'3.89S	22°43'46.03E
4	32°44'3.04S	22°43'46.81E
4	32°44'2.46S	22°43'48.25E
4	32°44'1.85S	22°43'50.38E
4	32°44'1.1S	22°43'53.18E
4	32°44'0.21S	22°43'55.56E
4	32°43'59.18S	22°43'56.84E
4	32°43'57.73S	22°43'57.5E
4	32°43'55.84S	22°43'57.71E
4	32°43'53.77S	22°43'57.52E
4	32°43'52.5S	22°43'57.41E
4	32°43'51.31S	22°43'57.59E
4	32°43'50.14S	22°43'58.16E
4	32°43'38.37S	22°44'8.25E
4	32°43'38.56S	22°44'57.67E
4	32°43'51.16S	22°45'10.16E
4	32°44'26.97S	22°44'36.23E
5	32°44'20.13S	22°43'52.28E
5	32°43'57.02S	22°43'12E
5	32°43'41.8S	22°43'17.37E
5	32°43'37.09S	22°43'19.26E
5	32°43'38.33S	22°44'6.8E
5	32°43'49.69S	22°43'56.84E
5	32°43'50.99S	22°43'56.2E
5	32°43'52.46S	22°43'55.98E
5	32°43'53.86S	22°43'56.1E
5	32°43'55.83S	22°43'56.29E
5	32°43'57.41S	22°43'56.12E
5	32°43'58.49S	22°43'55.63E
5	32°43'59.2S	22°43'54.75E

5	32°43'59.97S	22°43'52.68E
5	32°44'0.72S	22°43'49.94E
5	32°44'1.35S	22°43'47.71E
5	32°44'1.99S	22°43'46.12E
5	32°44'2.65S	22°43'44.78E
5	32°44'4.11S	22°43'43.73E
5	32°44'5.7S	22°43'43.7E
5	32°44'20.13S	22°43'52.28E
6	32°40'56.5S	22°50'50.79E
6	32°41'0.54S	22°50'47.9E
6	32°40'53.95S	22°50'34.77E
6	32°40'49.58S	22°50'38.05E
6	32°40'51.42S	22°50'46.65E
6	32°40'55.05S	22°50'50.55E
6	32°40'56.5S	22°50'50.79E
7	32°45'39.77S	22°45'44.21E
7	32°45'35.72S	22°46'7.81E
7	32°45'35.4S	22°46'13.49E
7	32°45'44.84S	22°46'9.15E
7	32°45'56.09S	22°46'4.17E
7	32°46'0.07S	22°45'59.39E
7	32°46'2S	22°45'49.91E
7	32°46'1.41S	22°45'45.43E
7	32°45'59.66S	22°45'42.85E
7	32°46'3.62S	22°45'34.61E
7	32°46'2.25S	22°45'30.66E
7	32°46'0.04S	22°45'29.23E
7	32°45'50.47S	22°45'30.32E
7	32°45'47.75S	22°45'36.06E
7	32°45'44.32S	22°45'37.26E
7	32°45'39.77S	22°45'44.21E
8	32°40'2.34S	22°49'57.21E
8	32°40'10.74S	22°50'5.35E
8	32°40'22.05S	22°49'49.32E
8	32°40'13.63S	22°49'41.3E
8	32°40'2.34S	22°49'57.21E
9	32°40'8.59S	22°49'38.25E
9	32°40'4.76S	22°49'43.34E
9	32°40'7.76S	22°49'46.46E
9	32°40'11.6S	22°49'41.49E
9	32°40'8.59S	22°49'38.25E
10	32°40'2.38S	22°49'47.22E
10	32°39'58.55S	22°49'52.31E
10	32°40'1.71S	22°49'55.55E
10	32°40'5.5S	22°49'50.58E
10	32°40'2.38S	22°49'47.22E
11	32°40'3.31S	22°49'35E
11	32°39'55.35S	22°49'46.29E
11	32°39'57.93S	22°49'49.22E
11	32°40'5.9S	22°49'37.43E
11	32°40'3.31S	22°49'35E
12	32°40'18.89S	22°50'19.81E
12	32°40'44.6S	22°50'19.76E
12	32°40'44.57S	22°50'0.26E
12	32°40'18.86S	22°50'0.3E
12	32°40'18.89S	22°50'19.81E
13	32°40'23.93S	22°50'34.57E
13	32°40'14.18S	22°50'21.38E
13	32°40'15.78S	22°50'19.63E
13	32°40'10.52S	22°50'12.58E

13	32°40'8.82S	22°50'14.33E
13	32°39'58.91S	22°50'1E
13	32°39'42.65S	22°50'18.06E
13	32°40'8.05S	22°50'51.34E
13	32°40'23.93S	22°50'34.57E

Wind and Solar developments with an approved Environmental Authorisation or applications under consideration within 30 km of the proposed area

No	EIA Reference No	Classification	Status of application	Distance from proposed area (km)
1	14/12/16/3/3/2/772	Solar PV	Approved	28.4
2	14/12/16/3/3/1/2584	Wind	Approved	21.5
3	14/12/16/3/3/1/2571	Wind	Approved	26.7
4	14/12/16/3/3/1/2578	Wind	Approved	25.3
5	14/12/16/3/3/2/2120	Wind	Approved	23.5
6	14/12/16/3/3/1/2583	Wind	Approved	14.6
7	14/12/16/3/3/2/2070	Wind	Approved	14.6
8	14/12/16/3/3/2/2072	Wind	Approved	21.7
9	14/12/16/3/3/2/925	Wind	Approved	25.3
10	14/12/16/3/3/1/2538	Wind	Approved	17
11	14/12/16/3/3/1/2465	Wind	Approved	25.3
12	12/12/20/1784	Wind	Approved	20.4
13	14/12/16/3/3/1/2582	Wind	Approved	14.6
14	14/12/16/3/3/2/2071	Wind	Approved	21.5
15	14/12/16/3/3/1/2537	Wind	Approved	23.5
16	14/12/16/3/3/2/774	Solar PV	Approved	28.4

Environmental Management Frameworks relevant to the application

No intersections with EMF areas found.

Environmental screening results and assessment outcomes

The following sections contain a summary of any development incentives, restrictions, exclusions or prohibitions that apply to the proposed development footprint as well as the most environmental sensitive features on the footprint based on the footprint sensitivity screening results for the application classification that was selected. The application classification selected for this report is:

Mining | Mining Right.

Relevant development incentives, restrictions, exclusions or prohibitions

The following development incentives, restrictions, exclusions or prohibitions and their implications that apply to this footprint are indicated below.

Incentive, restriction or prohibition	Implication
Strategic Transmission	https://screening.environment.gov.za/ScreeningDownloads/Developmen

Corridor-Central corridor	tZones/Combined_EGI.pdf
Renewable energy development zones 11-Beaufort West	https://screening.environment.gov.za/ScreeningDownloads/DevelopmentZones/Combined_REDZ.pdf
Strategic Gas Pipeline Corridors-Phase 9: Inland Corridor from Saldanha to Coega	https://screening.environment.gov.za/ScreeningDownloads/DevelopmentZones/Combined_GAS.pdf
Strategic Gas Pipeline Corridors-Phase 2: Mossel Bay to Coega	https://screening.environment.gov.za/ScreeningDownloads/DevelopmentZones/Combined_GAS.pdf

Proposed Development Area Environmental Sensitivity

The following summary of the development footprint environmental sensitivities is identified. Only the highest environmental sensitivity is indicated. The footprint environmental sensitivities for the proposed development footprint as identified, are indicative only and must be verified on site by a suitably qualified person before the specialist assessments identified below can be confirmed.

Theme	Very High sensitivity	High sensitivity	Medium sensitivity	Low sensitivity
Agriculture Theme		X		
Animal Species Theme		X		
Aquatic Biodiversity Theme	X			
Archaeological and Cultural Heritage Theme				X
Civil Aviation Theme		X		
Defence Theme				X
Paleontology Theme	X			
Plant Species Theme			X	
Terrestrial Biodiversity Theme	X			

Specialist assessments identified

Based on the selected classification, and the known impacts associated with the proposed development, the following list of specialist assessments have been identified for inclusion in the assessment report. It is the responsibility of the EAP to confirm this list and to motivate in the assessment report, the reason for not including any of the identified specialist study including the provision of photographic evidence of the footprint situation.

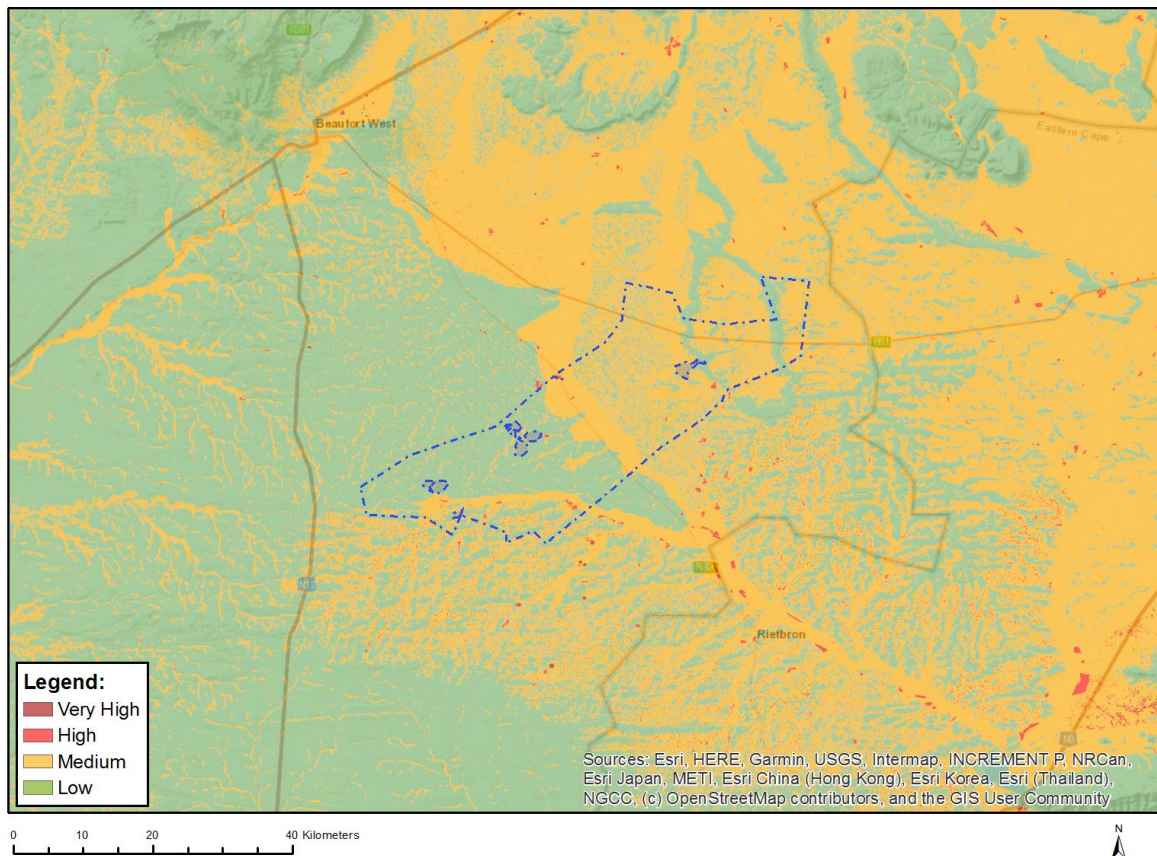
No	Specialist assessment	Assessment Protocol
1	Agricultural Impact Assessment	https://screening.environment.gov.za/ScreeningDownloads/AssessmentProtocols/Gazetted_General_Agriculture_Assessment_Protocols.pdf
2	Landscape/Visual Impact Assessment	https://screening.environment.gov.za/ScreeningDownloads/AssessmentProtocols/Gazetted_General_Requirement_Assessment_Protocols.pdf
3	Archaeological and Cultural Heritage Impact Assessment	https://screening.environment.gov.za/ScreeningDownloads/AssessmentProtocols/Gazetted_General_Requirement_Assessment_Protocols.pdf
4	Palaeontology Impact Assessment	https://screening.environment.gov.za/ScreeningDownloads/AssessmentProtocols/Gazetted_General_Requirement_Assessment_Protocols.pdf

		rotocols.pdf
5	Terrestrial Biodiversity Impact Assessment	https://screening.environment.gov.za/ScreeningDownloads/AssessmentProtocols/Gazetted Terrestrial Biodiversity Assessment Protocols.pdf
6	Aquatic Biodiversity Impact Assessment	https://screening.environment.gov.za/ScreeningDownloads/AssessmentProtocols/Gazetted Aquatic Biodiversity Assessment Protocols.pdf
7	Hydrology Assessment	https://screening.environment.gov.za/ScreeningDownloads/AssessmentProtocols/Gazetted General Requirement Assessment Protocols.pdf
8	Noise Impact Assessment	https://screening.environment.gov.za/ScreeningDownloads/AssessmentProtocols/Gazetted Noise Impacts Assessment Protocol.pdf
9	Radioactivity Impact Assessment	https://screening.environment.gov.za/ScreeningDownloads/AssessmentProtocols/Gazetted General Requirement Assessment Protocols.pdf
10	Traffic Impact Assessment	https://screening.environment.gov.za/ScreeningDownloads/AssessmentProtocols/Gazetted General Requirement Assessment Protocols.pdf
11	Geotechnical Assessment	https://screening.environment.gov.za/ScreeningDownloads/AssessmentProtocols/Gazetted General Requirement Assessment Protocols.pdf
12	Climate Impact Assessment	https://screening.environment.gov.za/ScreeningDownloads/AssessmentProtocols/Gazetted General Requirement Assessment Protocols.pdf
13	Health Impact Assessment	https://screening.environment.gov.za/ScreeningDownloads/AssessmentProtocols/Gazetted General Requirement Assessment Protocols.pdf
14	Socio-Economic Assessment	https://screening.environment.gov.za/ScreeningDownloads/AssessmentProtocols/Gazetted General Requirement Assessment Protocols.pdf
15	Ambient Air Quality Impact Assessment	https://screening.environment.gov.za/ScreeningDownloads/AssessmentProtocols/Gazetted General Requirement Assessment Protocols.pdf
16	Seismicity Assessment	https://screening.environment.gov.za/ScreeningDownloads/AssessmentProtocols/Gazetted General Requirement Assessment Protocols.pdf
17	Plant Species Assessment	https://screening.environment.gov.za/ScreeningDownloads/AssessmentProtocols/Gazetted Plant Species Assessment Protocols.pdf
18	Animal Species Assessment	https://screening.environment.gov.za/ScreeningDownloads/AssessmentProtocols/Gazetted Animal Species Assessment Protocols.pdf

Results of the environmental sensitivity of the proposed area.

The following section represents the results of the screening for environmental sensitivity of the proposed footprint for relevant environmental themes associated with the project classification. It is the duty of the EAP to ensure that the environmental themes provided by the screening tool are comprehensive and complete for the project. Refer to the disclaimer.

MAP OF RELATIVE AGRICULTURE THEME SENSITIVITY

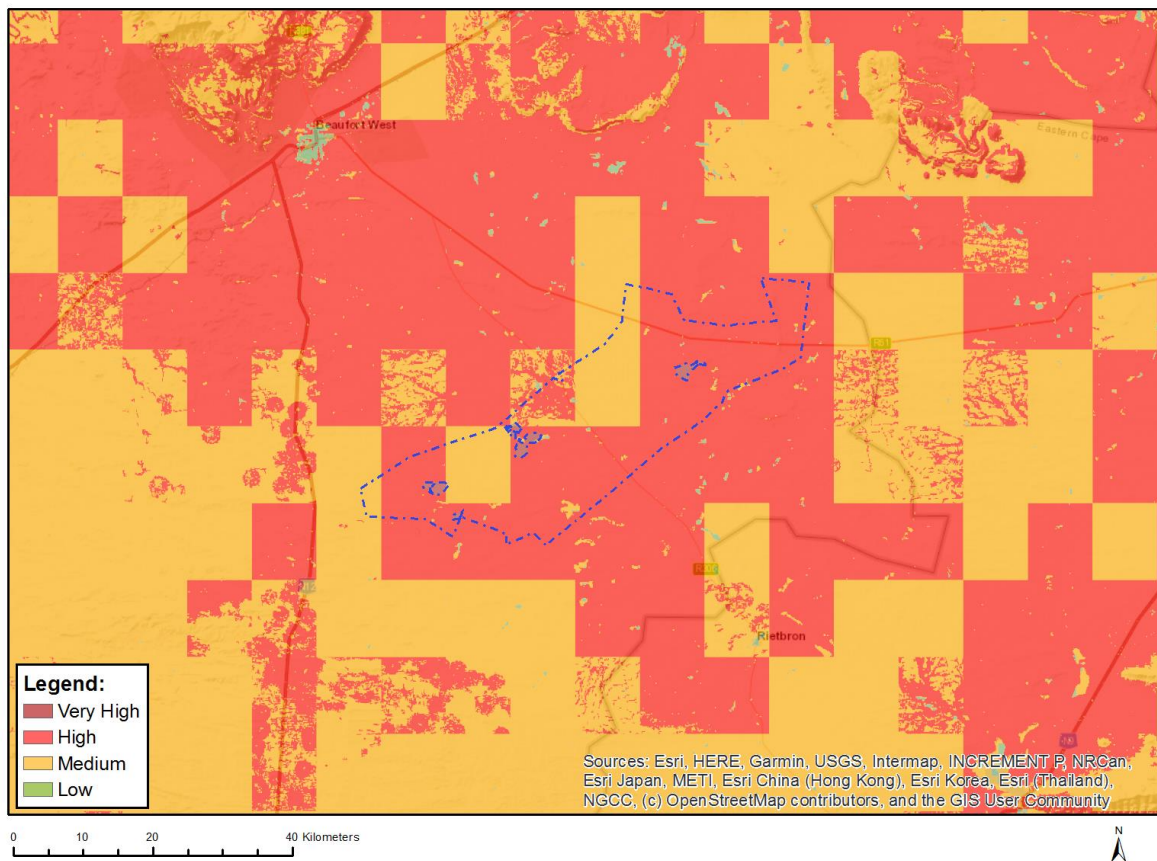


Very High sensitivity	High sensitivity	Medium sensitivity	Low sensitivity
	X		

Sensitivity Features:

Sensitivity	Feature(s)
High	Land capability;09. Moderate-High/10. Moderate-High
Low	Land capability;01. Very low/02. Very low/03. Low-Very low/04. Low-Very low/05. Low
Medium	Land capability;06. Low-Moderate/07. Low-Moderate/08. Moderate

MAP OF RELATIVE ANIMAL SPECIES THEME SENSITIVITY



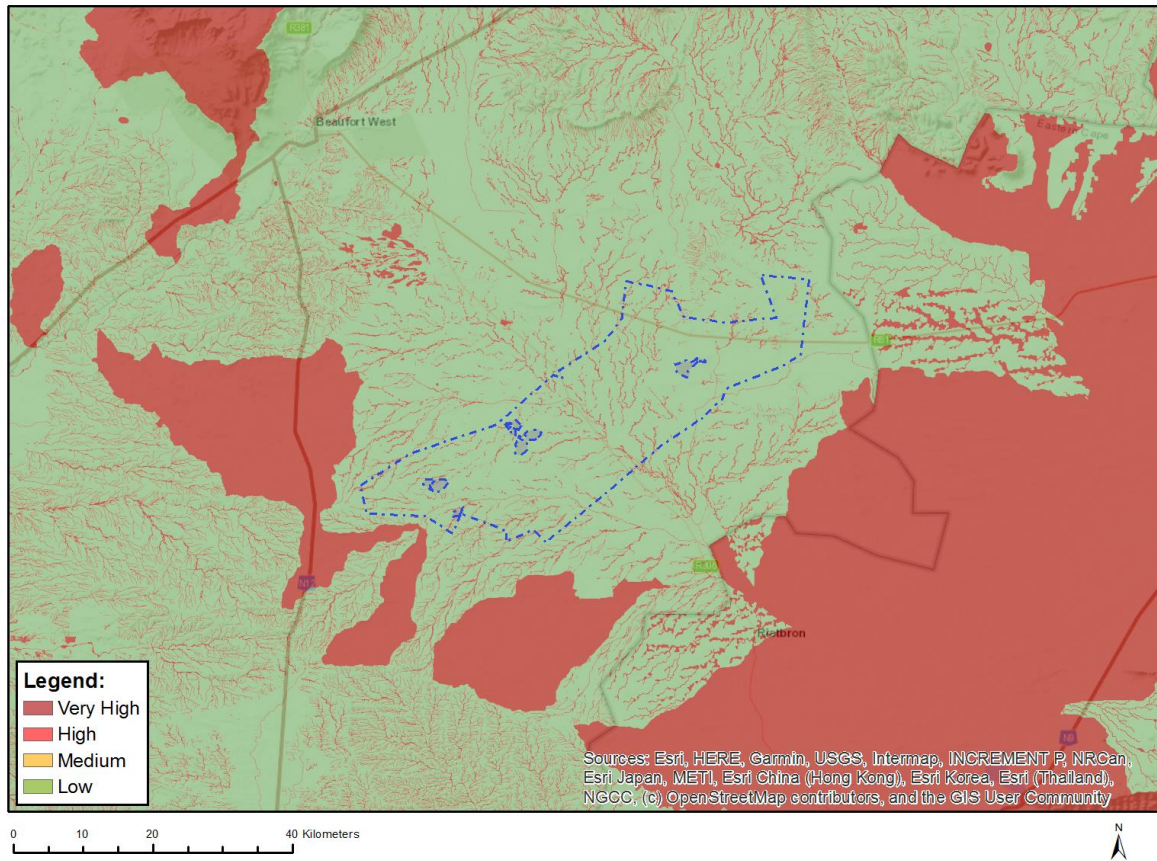
Where only a sensitive plant unique number or sensitive animal unique number is provided in the screening report and an assessment is required, the environmental assessment practitioner (EAP) or specialist is required to email SANBI at eiadatarequests@sanbi.org.za listing all sensitive species with their unique identifiers for which information is required. The name has been withheld as the species may be prone to illegal harvesting and must be protected. SANBI will release the actual species name after the details of the EAP or specialist have been documented.

Very High sensitivity	High sensitivity	Medium sensitivity	Low sensitivity
	X		

Sensitivity Features:

Sensitivity	Feature(s)
High	Aves-Afrotis afra
High	Aves-Neotis ludwigii
High	Reptilia-Chersobius boulengeri
Low	Subject to confirmation
Medium	Aves-Afrotis afra
Medium	Aves-Neotis ludwigii
Medium	Mammalia-Bunolagus monticularis
Medium	Reptilia-Chersobius boulengeri

MAP OF RELATIVE AQUATIC BIODIVERSITY THEME SENSITIVITY

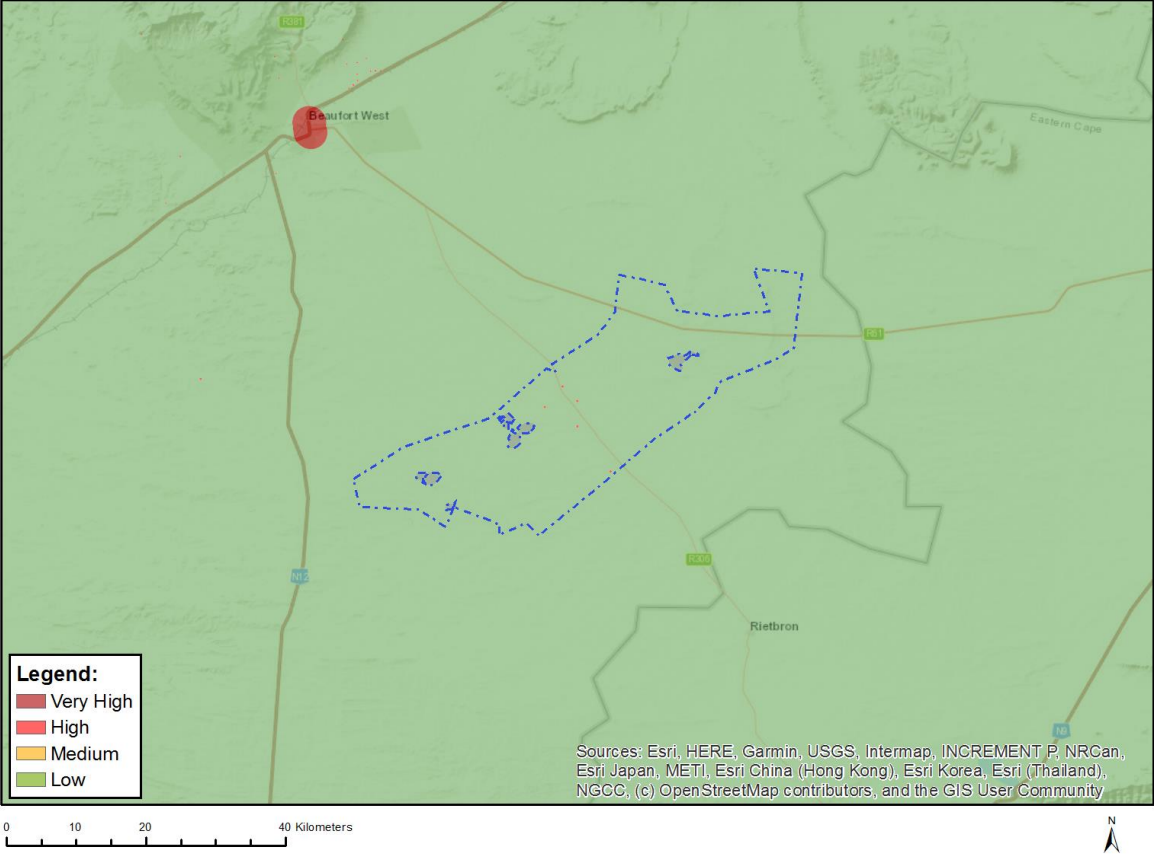


Very High sensitivity	High sensitivity	Medium sensitivity	Low sensitivity
X			

Sensitivity Features:

Sensitivity	Feature(s)
Low	Low sensitivity
Very High	ESA 1: Aquatic

MAP OF RELATIVE ARCHAEOLOGICAL AND CULTURAL HERITAGE THEME SENSITIVITY

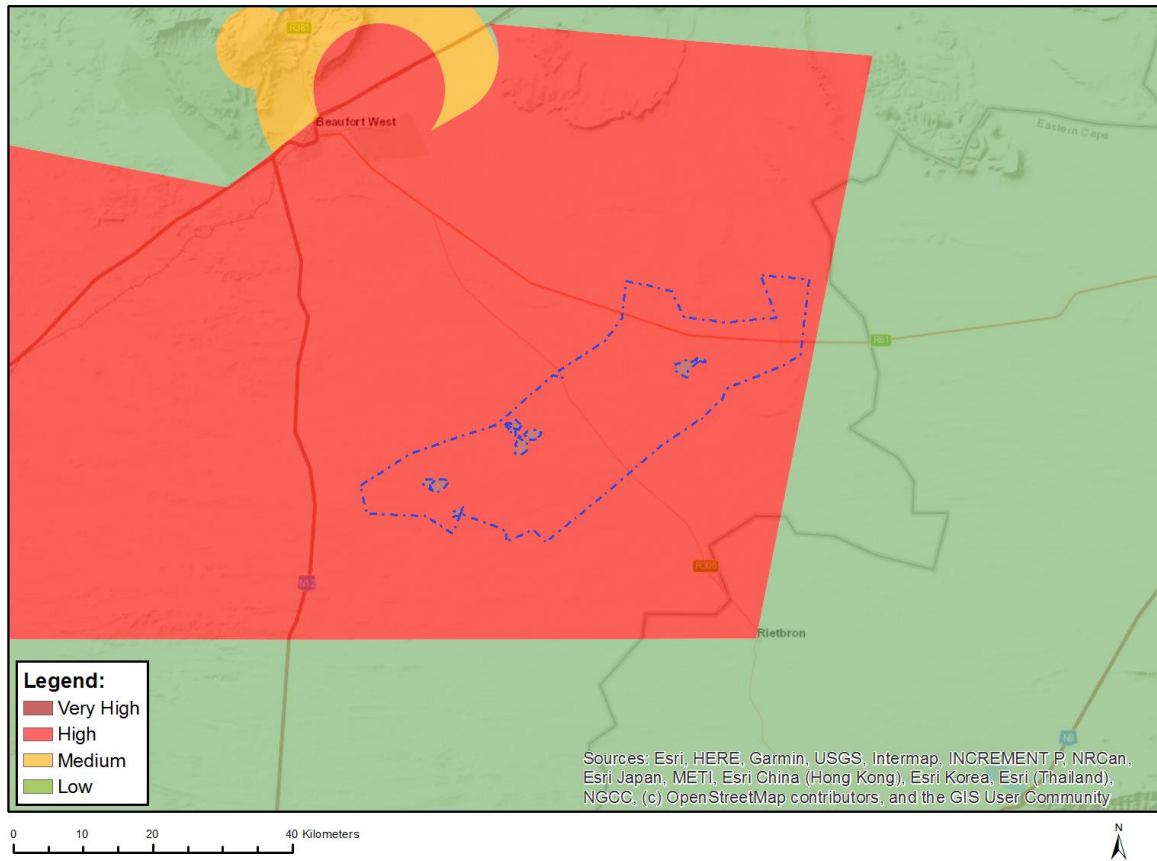


Very High sensitivity	High sensitivity	Medium sensitivity	Low sensitivity
			X

Sensitivity Features:

Sensitivity	Feature(s)
Low	Low sensitivity

MAP OF RELATIVE CIVIL AVIATION THEME SENSITIVITY

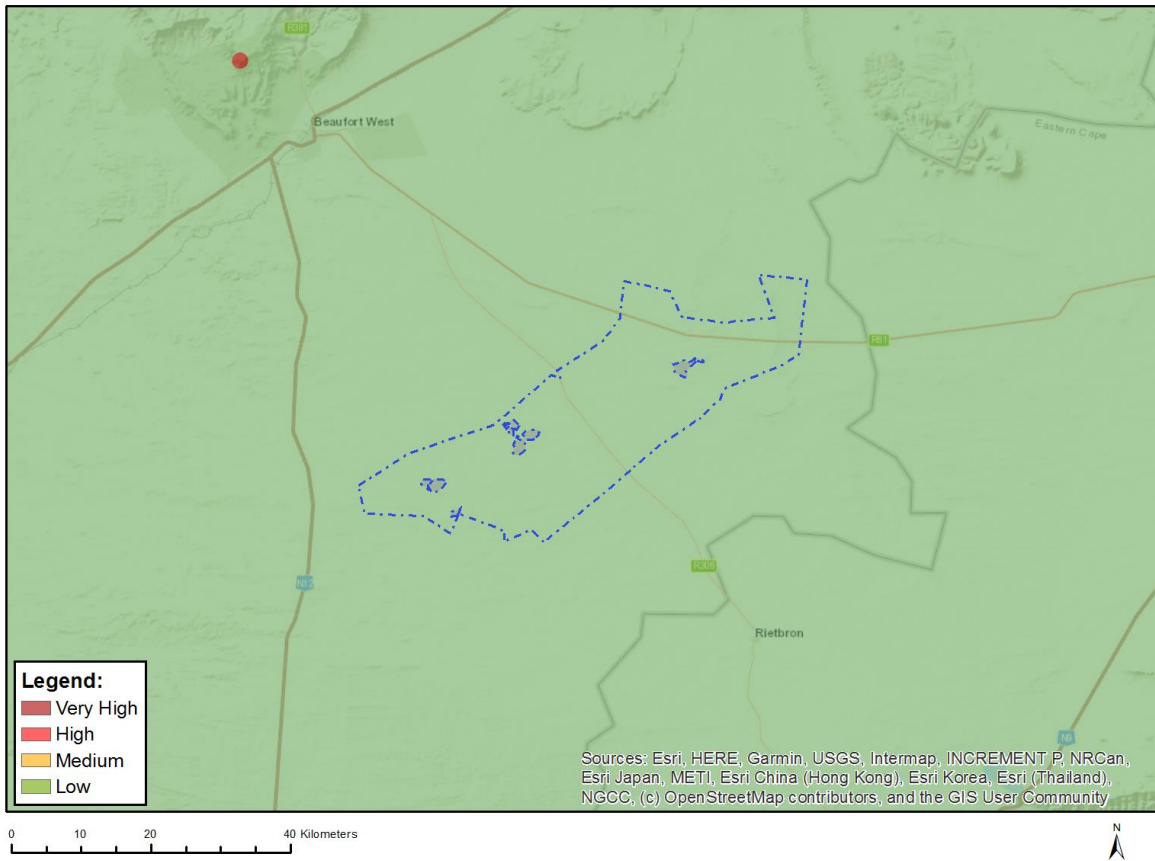


Very High sensitivity	High sensitivity	Medium sensitivity	Low sensitivity
	X		

Sensitivity Features:

Sensitivity	Feature(s)
High	Dangerous and restricted airspace as demarcated

MAP OF RELATIVE DEFENCE THEME SENSITIVITY

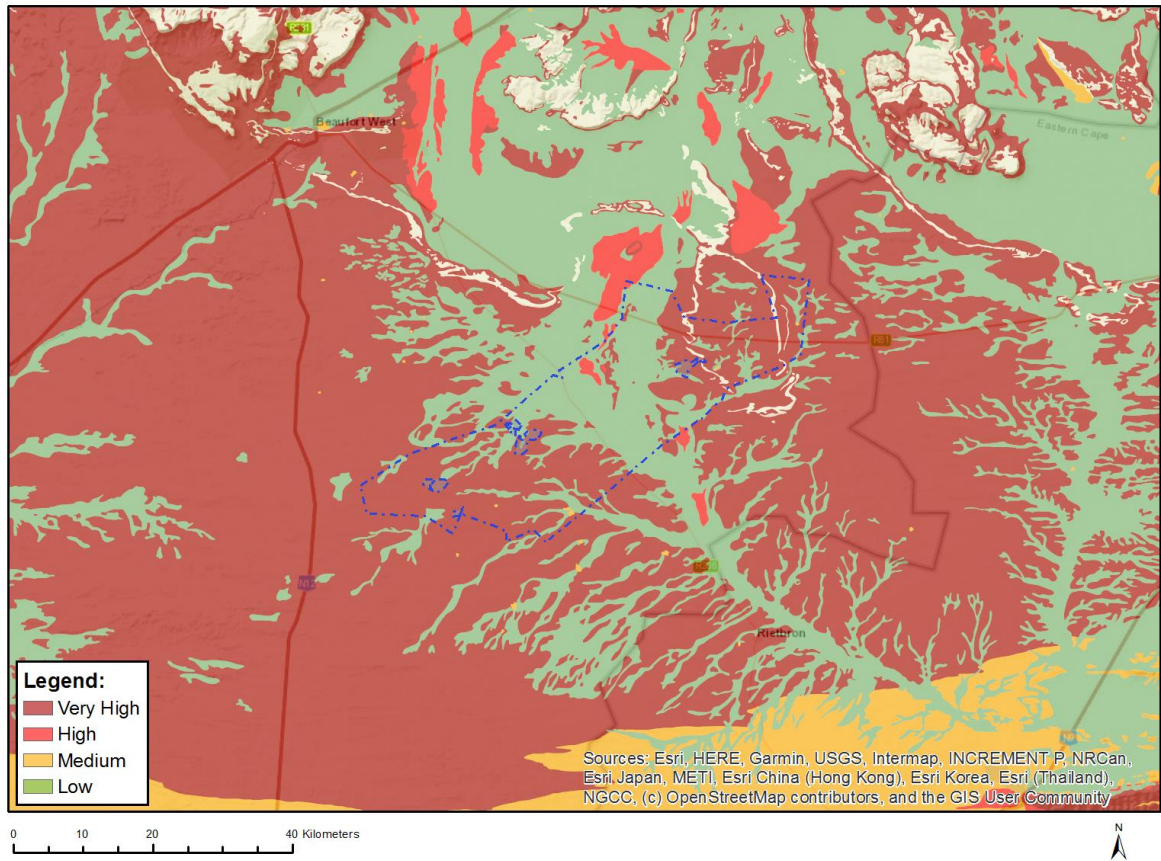


Very High sensitivity	High sensitivity	Medium sensitivity	Low sensitivity
			X

Sensitivity Features:

Sensitivity	Feature(s)
Low	Low Sensitivity

MAP OF RELATIVE PALEONTOLOGY THEME SENSITIVITY

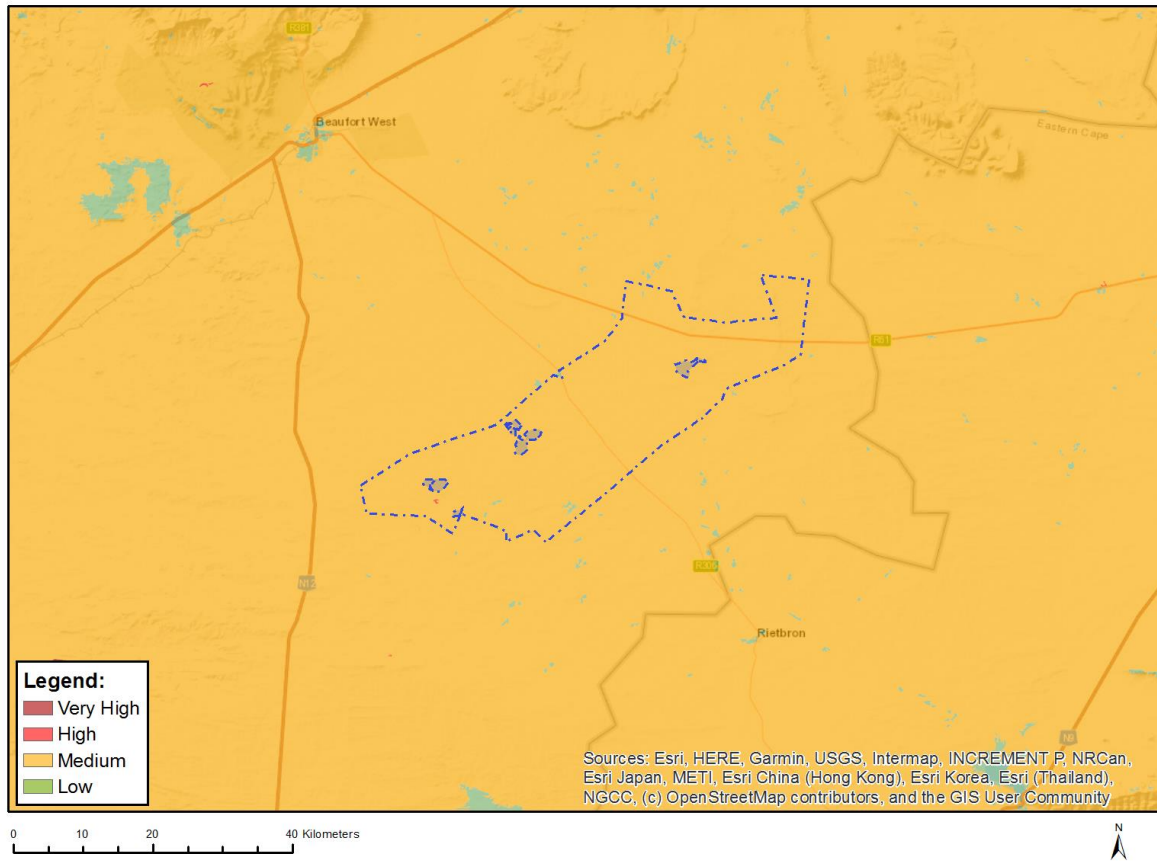


Very High sensitivity	High sensitivity	Medium sensitivity	Low sensitivity
X			

Sensitivity Features:

Sensitivity	Feature(s)
Low	Features with a Low paleontological sensitivity
Very High	Features with a Very High paleontological sensitivity

MAP OF RELATIVE PLANT SPECIES THEME SENSITIVITY



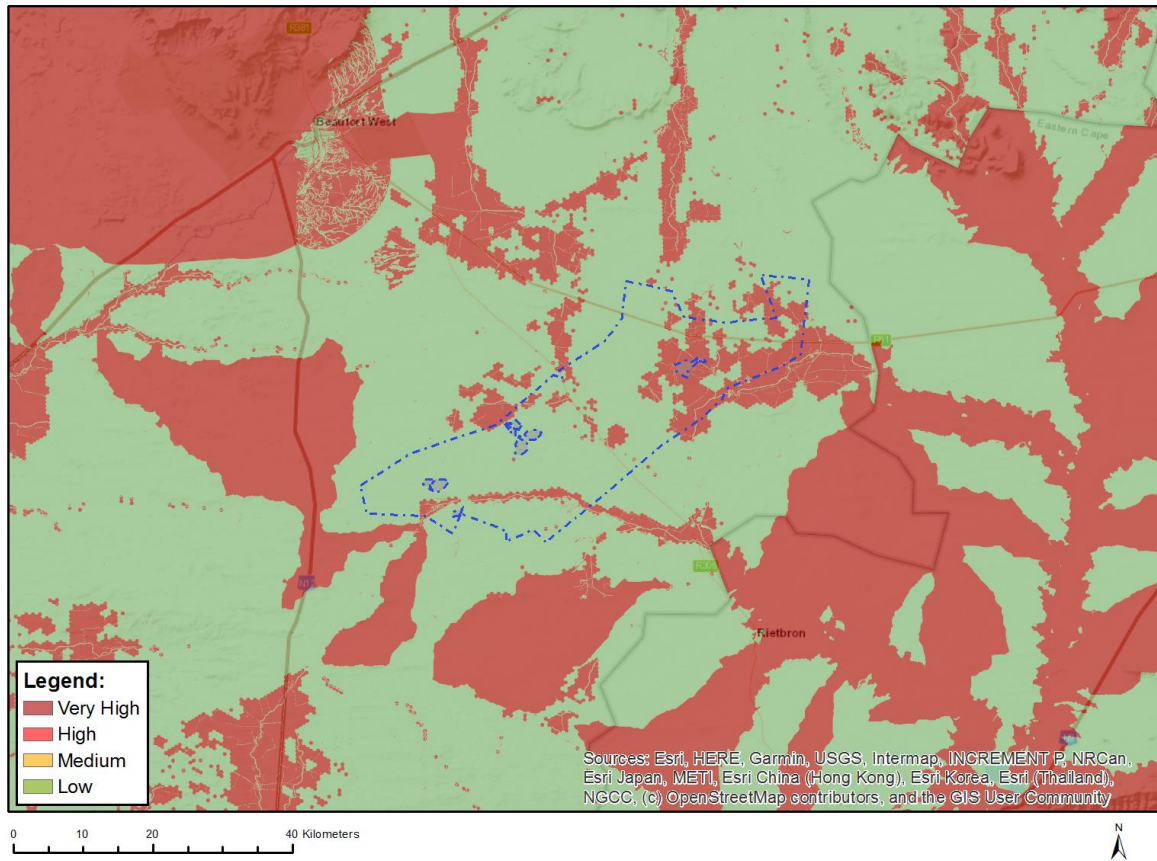
Where only a sensitive plant unique number or sensitive animal unique number is provided in the screening report and an assessment is required, the environmental assessment practitioner (EAP) or specialist is required to email SANBI at eiadatarequests@sanbi.org.za listing all sensitive species with their unique identifiers for which information is required. The name has been withheld as the species may be prone to illegal harvesting and must be protected. SANBI will release the actual species name after the details of the EAP or specialist have been documented.

Very High sensitivity	High sensitivity	Medium sensitivity	Low sensitivity
		X	

Sensitivity Features:

Sensitivity	Feature(s)
Medium	Ruschia beaufortensis
Medium	Sensitive species 383
Medium	Peersia frithii
Medium	Sensitive species 1212

MAP OF RELATIVE TERRESTRIAL BIODIVERSITY THEME SENSITIVITY



Very High sensitivity	High sensitivity	Medium sensitivity	Low sensitivity
X			

Sensitivity Features:

Sensitivity	Feature(s)
Low	Low Sensitivity
Very High	ESA 2: Restore from other land use
Very High	CBA 2: Terrestrial
Very High	CBA 1: Terrestrial